

T. Races, Parades, & Event Routes

The City of Salina welcomes races and parades. The City has designed several race and parade packages with predetermined popular or most common routes in the Arts, Commerce, and Entertainment (ACE) District and our City of Salina parks to support your event. We encourage race and parade organizers to select one of the below predetermined packages as they have known logistics, traffic management needs, time requirements, and associated costs.

If organizing a race or parade, whether as a separate special event or as part of a larger special event, you must submit an event route map as part of your Special Event Permit Application. Selecting predetermined race and parade routes makes this easy, as you just need to identify your preferred route.

Races:

The City of Salina offers nine (9) predetermined race routes. Several of the route take place partially or completely within a City of Salina Park. If all or part of your chosen race route takes place in a park you will need to make an on-line parks reservation ([Click Here](#)), that way we can make sure you race and other park activities don't interfere with one another. The predetermined routes are designed to meet your 1-mile, 2-mile, 5k, and 5-mile race needs and provide simpler logistics related to traffic management and event staffing while still providing scenic views for your participants. Our predetermined marathon route is even approved as Boston Marathon qualification!

Race maps included are two sided. Each route shows an overview map with basic info like length, capacity, and volunteers needed. The other side of the map shows facilities and route details.

Route Name	Race Length Capability	Volunteers Needed	Park Reservation Required	Permit Level
Bill Burke Park Run Route	<ul style="list-style-type: none">1 Mile5K	2	Yes	Advanced 4A
Jerry Ivey Park Run Route	<ul style="list-style-type: none">1 Mile	2	Yes	Advanced 4A
Lakewood Park Run Route	<ul style="list-style-type: none">1 Mile2 Mile5K	2	Yes	Advanced 4B
Soccer Complex Run Route	<ul style="list-style-type: none">1 Mile5K5 Mile	2	Yes	Advanced 4A
Oakdale & Kenwood Parks Run Route	<ul style="list-style-type: none">5K1 Mile	20	Yes	Advanced 4B
Downtown	<ul style="list-style-type: none">1 Mile5K	22	Yes	Advanced 4B
Downtown Plus	<ul style="list-style-type: none">2 Mile5 Mile	19	Yes	Advanced 4B
Santa Fe 1	<ul style="list-style-type: none">5K	22	No	Advanced 4B
Santa Fe 2	<ul style="list-style-type: none">5K	18	Yes	Advanced 4B
Marathon	<ul style="list-style-type: none">26.2 Miles	120	Yes	Advanced 4C

NOTE:

Any races having associated events at other locations (not directly associated with the race route and during the race) like an after party, pancake breakfast, or spaghetti feed will be considered a “multi-location event” and will need to indicate as such on the special event permit. Please note multi-location events are permitted at an Advanced Level 5. If you have questions about multi-location events please call 785-309-5715 to speak with Community and Development Services Staff.

Parades:

The City of Salina also offers four (4) predetermined parade routes for your celebratory event.

Routes:

- Downtown Parade Route 1 (Elm Street to Prescott Avenue)
- Downtown Parade Route 2 (Elm Street to South Street)
- School Parade Route

NOTE: Each high school is permitted one (1) Homecoming Parade on established routes each academic year.

Multi-Location Events:

Any event including a race or parade will automatically qualify as a multi-level event and will need to indicate as such on the special event permit. Multi-location events are permitted at an Advanced Level 5.

Custom Race or Parade Routes:

The City will consider custom race or parade routes if one of the predetermined routes does not fit your event needs. However, custom packages require additional time and costs related to in-depth staff review, approval, and execution.

If you plan to request a custom race or parade route, a hand-drawn or digital event route map must be provided for the City’s review and consideration. This visual representation of your route must mark the locations of the following event elements:

- Alcoholic and non-alcoholic beverage service areas (*NOTE: alcohol is allowed by event location and pursuant to state and local regulations*)
- Barricades and street closures
- Boundaries denoting the area being used for the event
- Entertainment areas (e.g., bounce houses, dunk tanks, carnival games, etc.)
- Entrances / exits
- Equipment (e.g., generators, fans, heaters, etc.)
- Fencing or other enclosures (*NOTE: needs preapproval by Parks & Recreation and Kansas811 to locate underground utilities before digging*)
- Fire lane(s)
- First aid

- Food trucks/trailers/carts or other food service areas
- Handicap access
- Parking
- Portable restrooms
- Security locations
- Seating and/or tables
- Signage
- Site Triangle (*NOTE: you should not have anything taller than thirty-six (36) inches within fifteen (15) feet from any public street, private road, or driveway unless approved by staff*)
- Stages
- Tents (*NOTE: installation specifications and inspection requirements, see Section Z for more details*)
- Vendor booths (food and non-food)
- Waste and recycling receptacles

You must also provide a timeline of your set-up and tear-down, including delivery and retrieval times.

The City of Salina will conduct a final inspection of your race or parade route on the day of your event before the designated start time.

Please contact the Department of Community & Development Services at (785) 309-5715 with questions regarding races and parades.

This page has been intentionally left blank.

Continue to view race route maps....

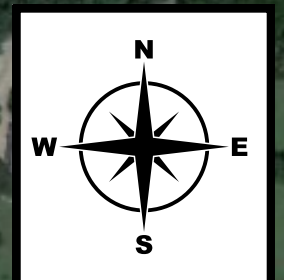
Race Route Bill Burke Park

Length(s) of Run: 1 Mile / 5K

Max Capacity of Runners: No Data

Volunteers Needed: 2

Level of Application: Adv 4A



Race Route Bill Burke Park

Barricade



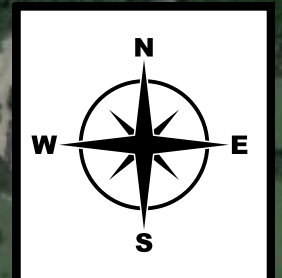
Volunteers



Bathrooms



Parking



Race Route Downtown 5K

Length(s) of Run: 5K / 1 Mile

Max Capacity of Runners: No Data

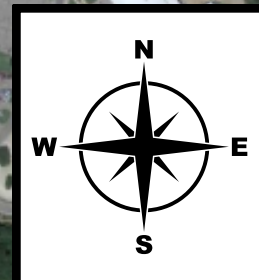
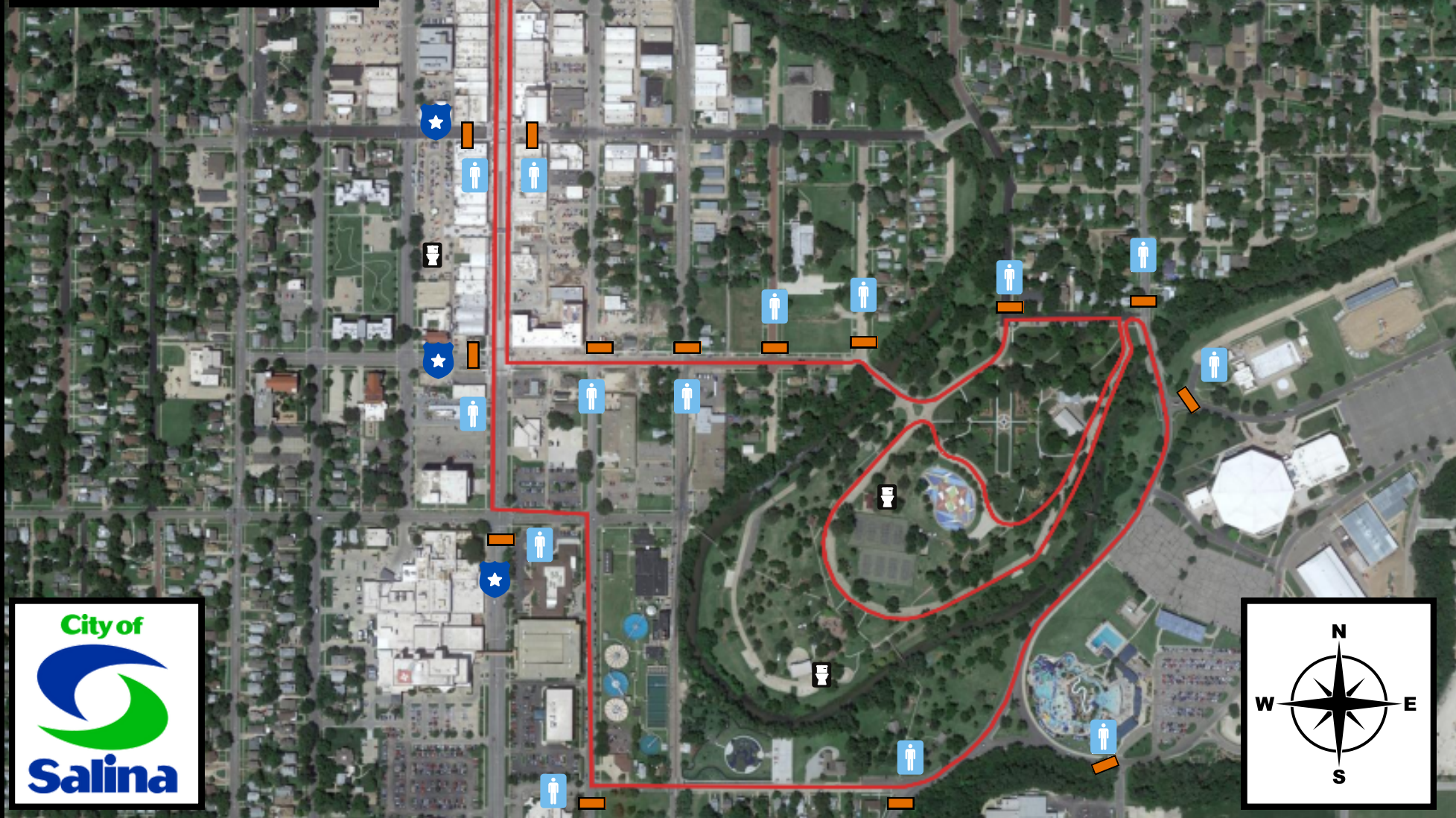
Volunteers Needed: 22

Level of Application: Adv 4B



Race Route Downtown 5K

- | | | | |
|--------------|---|------------|---|
| Start/Finish | ★ | Volunteers | 👤 |
| Barricade | 🚧 | Parking | P |
| Police | 👮 | Bathrooms | 🚻 |
| Staging Area | i | | |



Race Route Downtown Plus

Length(s) of Run: 2 / 5 Mile

Max Capacity of Runners: No Data

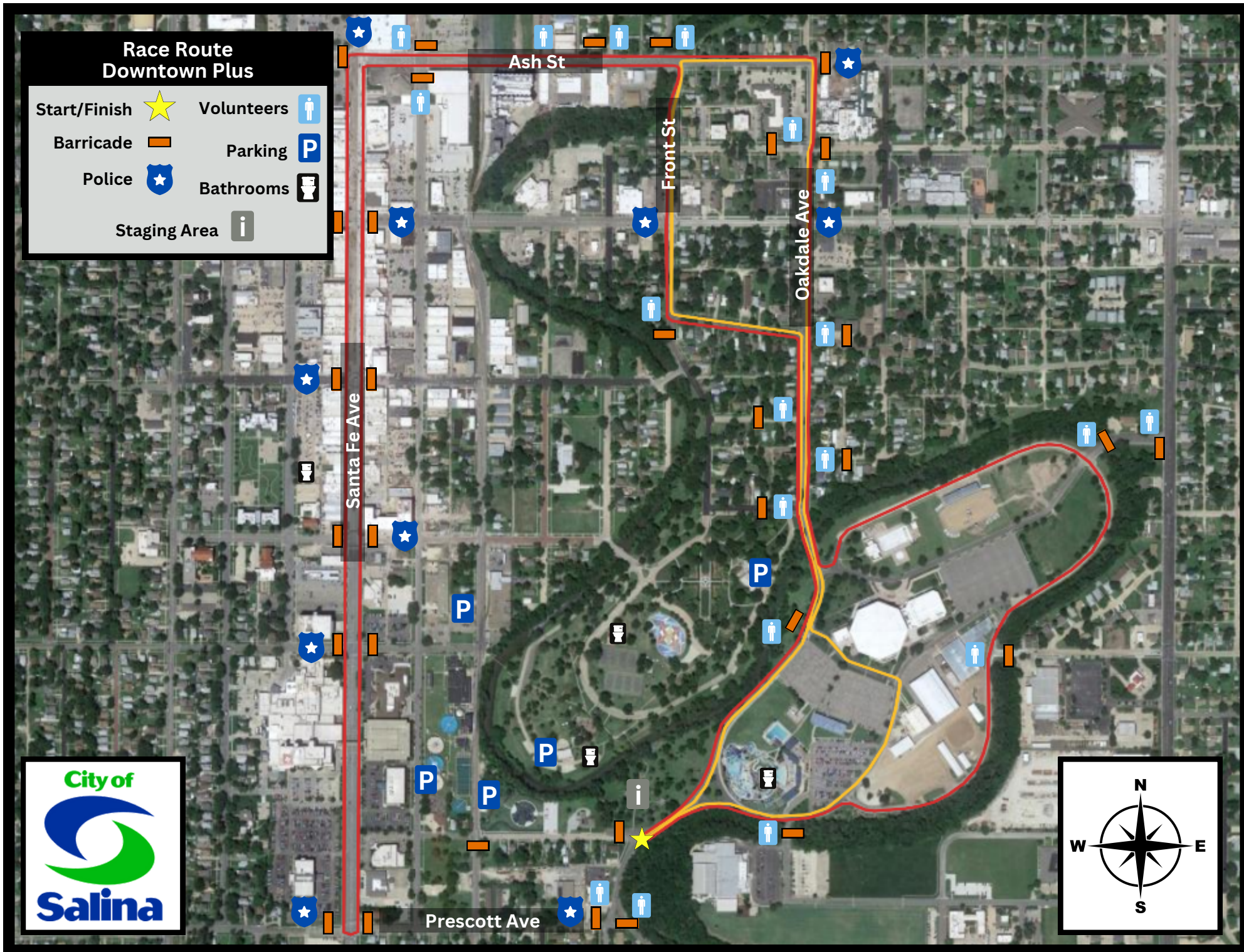
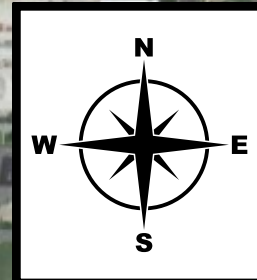
Volunteers Needed: 19

Level of Application: Adv 4B



Race Route Downtown Plus

- Start/Finish 
- Barricade 
- Police 
- Staging Area 
- Volunteers 
- Parking 
- Bathrooms 



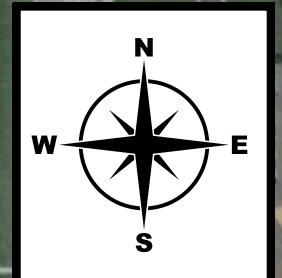
Race Route Jerry Ivey Park

Length(s) of Run: 1 Mile

Max Capacity of Runners: No Data

Volunteers Needed: 2

Level of Application: Adv 4A



Race Route Jerry Ivey Park

Barricade



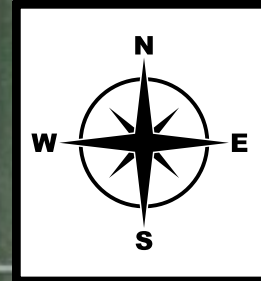
Volunteers



Bathrooms



Parking



Race Route Lakewood Park

Length(s) of Run: 1 Mile / 2 Mile / 5K

Max Capacity of Runners: No Data

Volunteers Needed: 2

Level of Application: Adv 4B



Race Route Lakewood Park

Barricade



Volunteers



Bathrooms



Parking



© 2023 Google

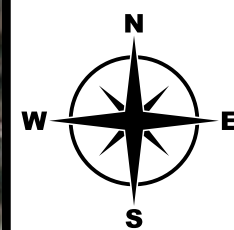
© 2023 Google

© 2023 Google

City of



Salina



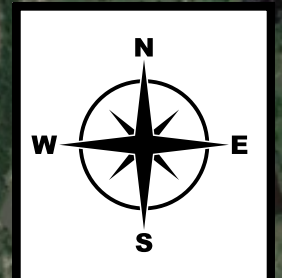
Race Route
Magnolia Soccer Complex - Levee

Length(s) of Run: 1 Mile / 5 K / 5 Mile

Max Capacity of Runners: No Data

Volunteers Needed: 2

Level of Application: Adv 4A



Race Route
Magnolia Soccer Complex - Levee

- Barricade  Volunteers 
- Bathrooms  Parking 



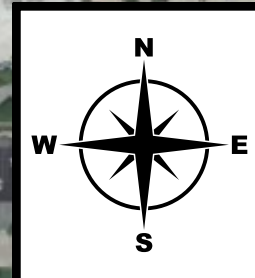
Race Route Oakdale & Kenwood Park

Length(s) of Run: 5K / 1 Mile

Max Capacity of Runners: No Data

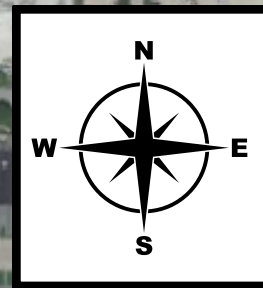
Volunteers Needed: 20

Level of Application: Adv 4B



Race Route Oakdale & Kenwood Park

Start/Finish	★	Turn Around	★
Barricade	■	Volunteers	👤
Staging Area	i	Parking	P
Police	👮	Bathrooms	🚻



Race Route Santa Fe Race

Length(s) of Run: 5K

Max Capacity of Runners: No Data

Volunteers Needed: 22

Level of Application: Adv 4B

Mulberry

Santa Fe Ave

Claflin



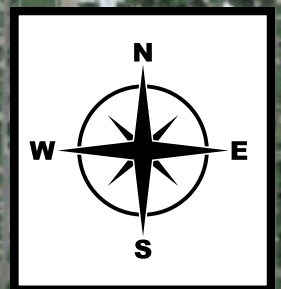
Race Route
Santa Fe Race

Start/Finish	★	Volunteers	👤
Barricade	🚧	Parking	P
Police	👮	Bathrooms	🚻
Staging Area	i		

Mulberry

Santa Fe Ave

Claflin



Race Route Santa Fe 2

Length(s) of Run: 5K

Max Capacity of Runners: No Data

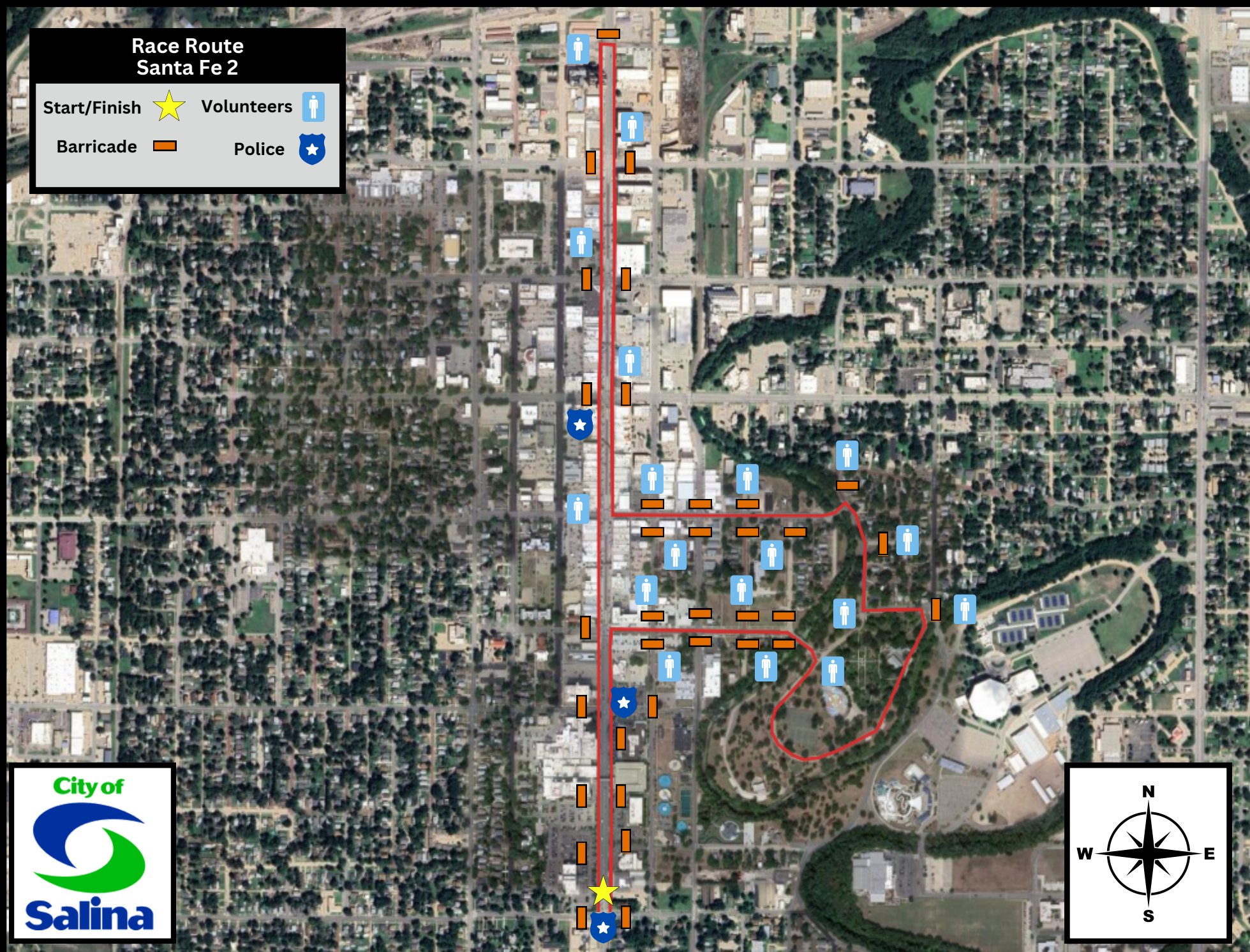
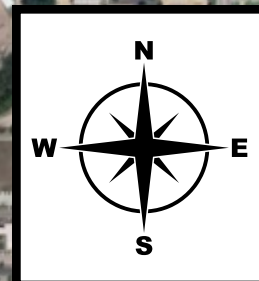
Volunteers Needed: 18

Level of Application: Adv. 4B



Race Route Santa Fe 2

Start/Finish ★ Volunteers 
Barricade  Police 



Race Route 2022 Crossroads Marathon

Length(s) of Run: 26.2 miles

Max Capacity of Runners: No Data

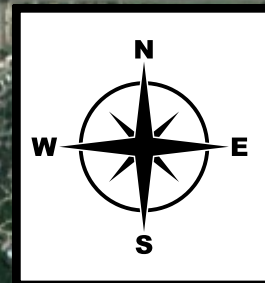
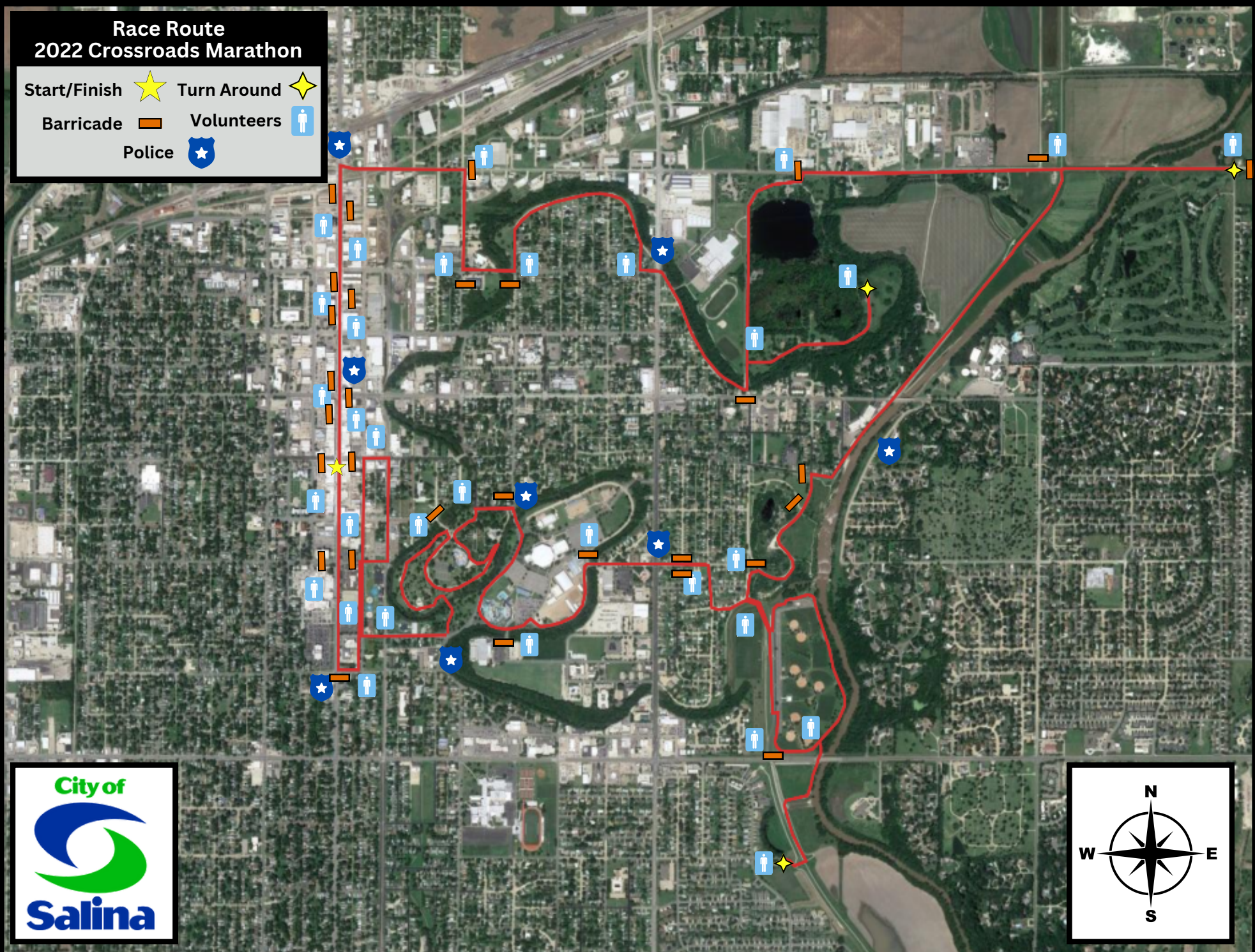
Volunteers Needed: 120

Level of Application: Adv 4C



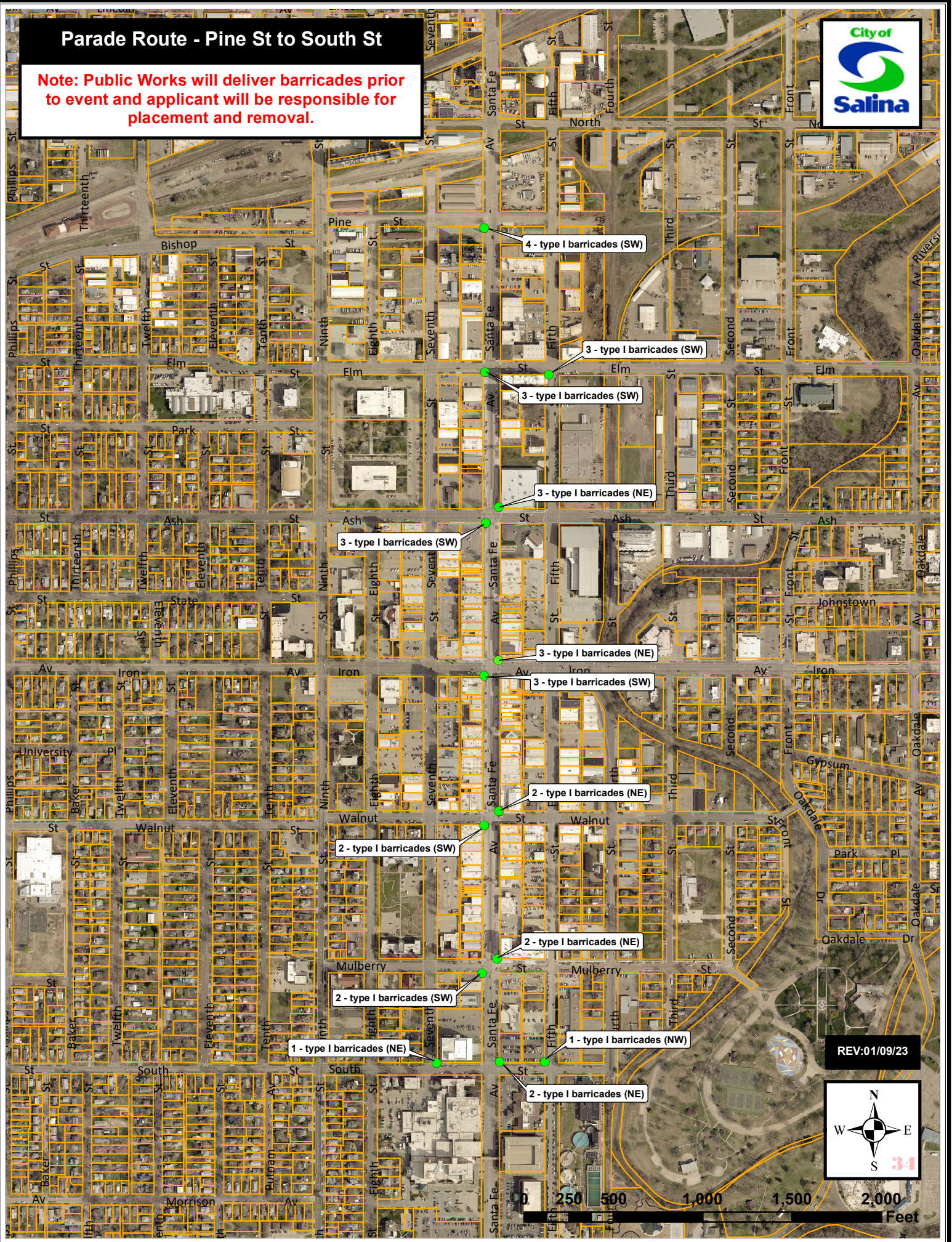
Race Route 2022 Crossroads Marathon

Start/Finish ★ Turn Around ★
Barricade ■ Volunteers ■
Police ★



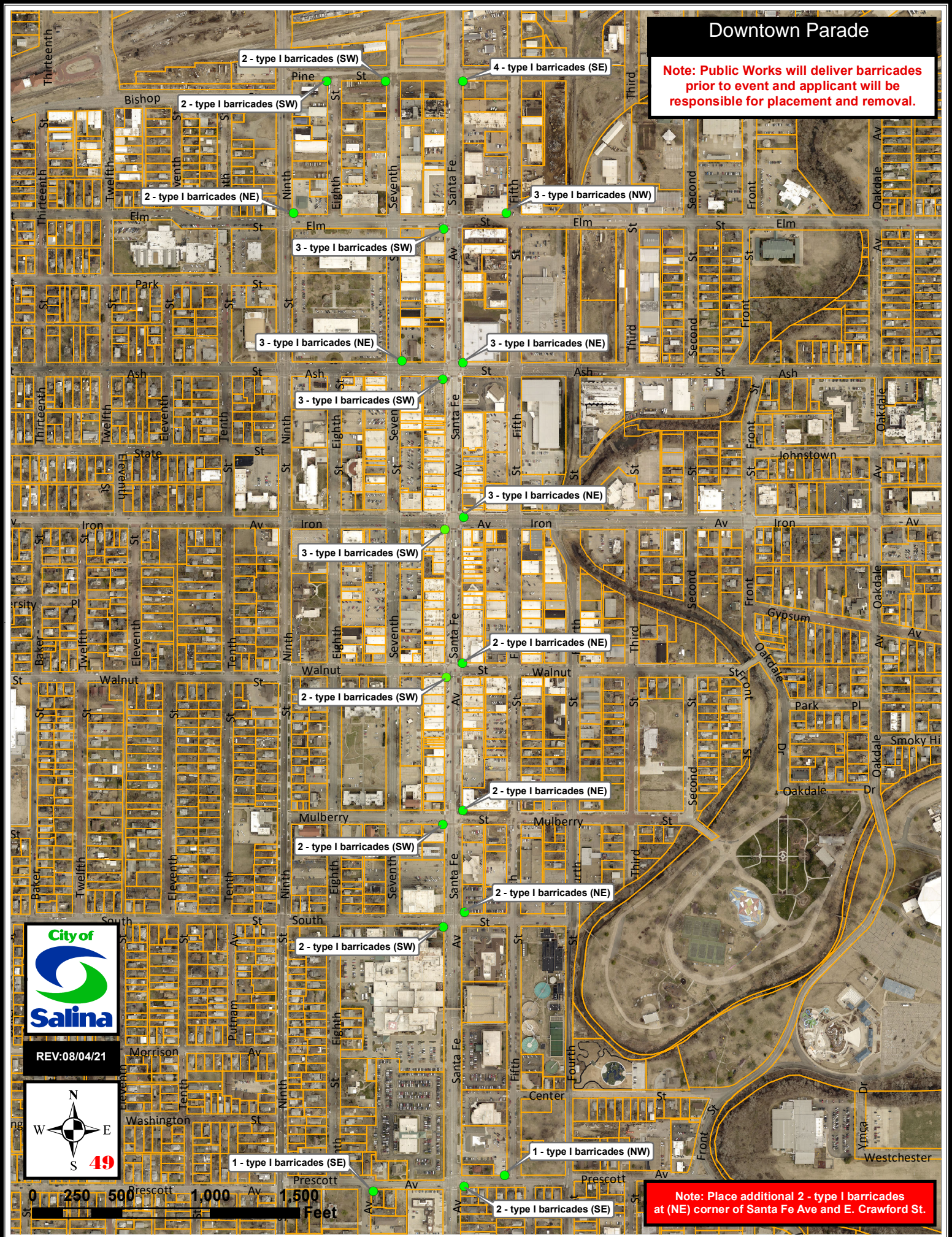
Parade Route - Pine St to South St

Note: Public Works will deliver barricades prior to event and applicant will be responsible for placement and removal.



Downtown Parade

Note: Public Works will deliver barricades prior to event and applicant will be responsible for placement and removal.



Note: Place additional 2 - type I barricades at (NE) corner of Santa Fe Ave and E. Crawford St.

Schools "Rolling" Parade Route

No barricades, police only

Masonic
Temple
Lot
336 S
Santa Fe
Ave



Salina Central High School
650 E Crawford St